

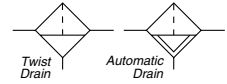
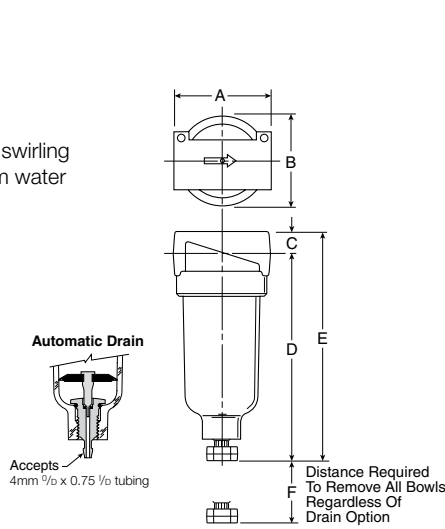


Miniature FRL Series

14F Filters - Miniature

Features

- Excellent water removal efficiency.
- Unique deflector plate that creates swirling of the air stream ensuring maximum water and dirt separation.
- 5 micron element standard.
- High Flow: 1/8" – 10 dm³/s
1/4" – 11 dm³/s



Port Size	BSPP	
	Twist Drain	Automatic Pulse Drain
Poly Bowl		
1/8"	14F01BB1	14F05BB1
1/4"	14F11BB1	14F15BB1

14F Filter Dimensions (mm)		
A 43	B 39	C 10
D 97	D† 99	E 107
E† 108	F 41	

Standard part numbers shown.
For other models refer to ordering information below.

§ dm³/s = 6.2 bar inlet and 0.3 bar pressure drop.

† With Automatic Pulse Drain.

Ordering Information

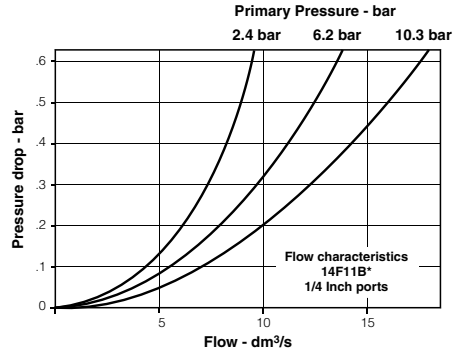
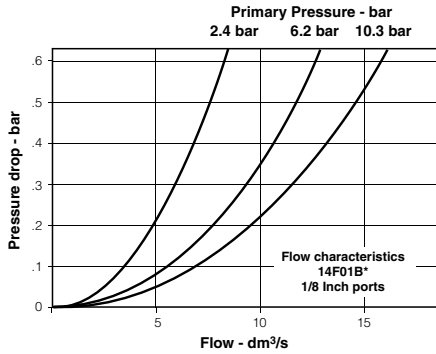
1
4
F
1
1
B
B
1

	Port size	Bowl options	Elements
0	1/8 Inch	1	B
1	1/4 Inch	5	5 Micron

	Port type
Blank	NPT
1	BSPP

NOTE: BOLD OPTIONS ARE STANDARD.

Technical Information



14F Filter Kits & Accessories

Bowl Kits –

Poly Bowl –

- Automatic Pulse Drain PS408P
- Twist Drain PS404P

Filter Element Kits –

- 5 Micron PS403P

- Mounting Bracket Kit** PS417BP

Specifications

Automatic Pulse Drain Tube Barb 4mm^{OD} x 0.75 1/8

Bowl Capacity 30 cm³

Port Threads 1/8, 1/4 Inch

Pressure & Temperature Ratings –

Polycarbonate Bowl 0 to 10.3 bar
0°C to 52°C

Automatic Pulse Drain 0.7 to 10.3 bar
at 52°C or less

Weight 180 g

Materials of Construction

Body Zinc Bowl Transparent Polycarbonate

Deflector, Element Holder & Baffle Plastic

Drains –

Twist Drain –

Body & Stem Plastic

Seals Nitrile

Automatic Pulse Drain –

Piston & Seals Nitrile

Stem, Seat, Adaptor & Washers Aluminum

Filter Elements –

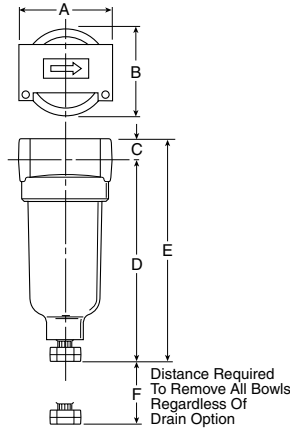
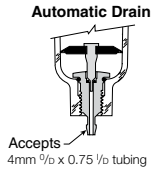
5 Micron (Standard) Plastic

Seals Nitrile

10F Coalescing Filters - Miniature

Features

- Removes liquid aerosols and sub-micron particles.
- Liquids gravitate to the bottom of the element and will not re-enter the airstream.
- Oil free air for critical applications, such as air gauging and pneumatic instrumentation and controls.
- 99.97% DOP efficiency.
- High Flow: Grade 6 Element
 - 1/8" – 8 dm³/s
 - 1/4" – 9 dm³/s



Port Size	BSPP	
	Twist Drain	Automatic Pulse Drain
Poly Bowl		
1/8"	10F01ED1	10F05ED1
1/4"	10F11ED1	10F15ED1

Standard part numbers shown.

§ dm³/s = 6.2 bar inlet and 0.3 bar pressure drop.

10F Coalescing Filter Dimensions (mm)		
A	B	C
43	39,6	10
D	D [†]	E
97	93	107
E [†]	F	
103	41	

[†] With Automatic Pulse Drain.

Ordering Information

1
0
F

1
1
E
D
-

	Port size
0	1/8 Inch
1	1/4 Inch

	Bowl options
1	Twist drain
5	Automatic pulse drain

	Elements
E	0.01 um

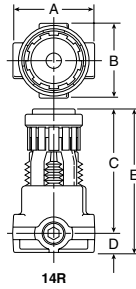
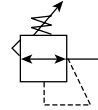
	Port type
Blank	NPT
1	BSPP

NOTE: BOLD OPTIONS ARE STANDARD.

14R Regulators - Miniature

Features

- Unbalanced poppet standard.
- Solid control piston with lip seal for extended life.
- Non-rising adjusting knob.
- Compact, 73,2mm high by 42mm wide.
- High Flow: 1/8" – 6 dm³/s
1/4" – 7 dm³/s



Port Size	8 bar - BSP
Without Gauge	
1/8"	14R013FC1
1/4"	14R113FC1

14R Regulator Dimensions (mm)					
14R	A	B	C	D	E
	42	40	63,5	10	73

Standard part numbers shown bold. For other models refer to ordering information below.

NOTE: 31mm dia. hole required for panel mounting.

§ dm³/s = 6.9 bar inlet, 6.2 bar no flow secondary setting and 0.7 bar pressure drop.

Ordering Information

1
4
R
1
13
F
C
1

	Port size
0	Port size 1/8 Inch pipe 1/8 Inch gauge port
1	1/4 Inch pipe 1/8 Inch gauge port

	Pressure range
	Without gauge - Yellow knob
10	2 bar
11	4 bar
13	8 bar

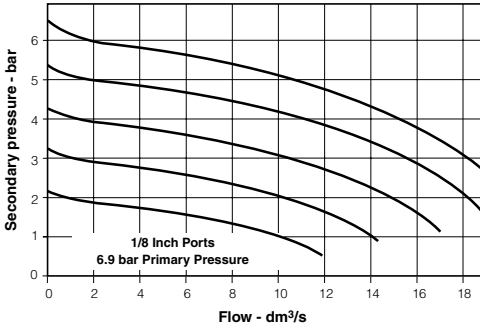
	Relief
F	Relieving
G	Non-Relieving

	Port type
Blank	NPT
1	BSPP

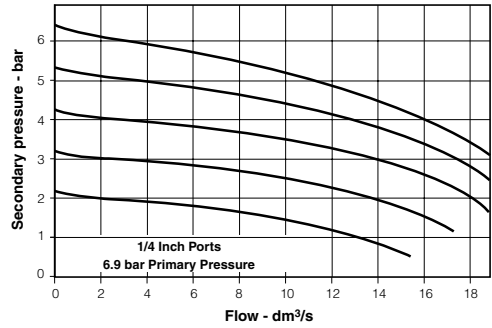
NOTE: BOLD OPTIONS ARE STANDARD.

Technical Information

**Relief and Flow Characteristics
14R013F***



**Relief and Flow Characteristics
14R113F***



CAUTION:

REGULATOR PRESSURE ADJUSTMENT – The working range of knob adjustment is designed to permit outlet pressures within their full range. Pressure adjustment beyond this range is also possible because the knob is not a limiting device. This is a common characteristic of most industrial regulators, and limiting devices may be obtained only by special design.

For best performance, regulated pressure should always be set by increasing the pressure up to the desired setting.

⚠ WARNING

**Product rupture can cause serious injury.
Do not connect regulator to bottled gas.
Do not exceed maximum primary pressure rating.**

14R Regulator Kits & Accessories

- Bonnet Assembly Kit** L01369
- Gauges** – 0 to 2 bar - 1/8.....P3D-KAB1AYN
- 0 to 4 bar - 1/8.....P3D-KAB1ALN
- 0 to 10 bar - 1/8.....P3D-KAB1ANN
- Mounting Bracket Kit (Includes Panel Mount Nut)** PS417BP
- Panel Mount Nuts** – Plastic.....P78652
- Metal.....P01531
- Service Kits** – Non-Relieving..... PS422P
- Relieving..... PS423P

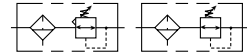
Specifications

- Gauge Ports (2)** 1/8
(Can be used for Full Flow)
- Port Threads** 1/8, 1/4 Inch
- Pressure & Temperature Ratings** – 0 to 20.7 bar 0°C to 52°C
- Secondary Pressure Ranges** –
- Standard Pressure..... 0 to 8 bar
- Medium Pressure 0 to 4 bar
- Medium Pressure 0 to 2 bar
- Weight** – 14R 140 g

Materials of Construction

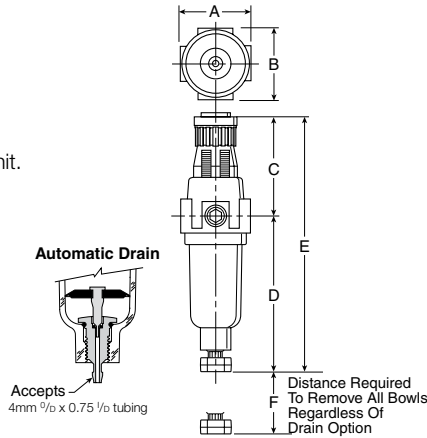
- Adjusting Nut** Brass
- Adjusting Stem & Spring** Steel
- Body** Zinc
- Bonnet, Seat, Piston & Valve Poppet** Plastic
- Seals** Nitrile

14E Filter / Regulator - Miniature



Features

- Excellent water removal efficiency.
- Unbalanced poppet standard.
- Solid control piston for extended life.
- Space saving package offers both filter and regulator features in one integral unit.
- Non-rising adjustment knob.
- Two full flow 1/8" gauge ports.
- High Flow: 1/8" – 7 dm³/s§
1/4" – 8 dm³/s§



Port Size	8 BAR - BSPP	
	Twist Drain	Automatic Pulse Drain
Poly Bowl†		
1/8"	14E01B13FC1	14E05B13FC1
1/4"	14E11B13FC1	14E15B13FC1

14E Filter / Regulator Dimensions (mm)		
A 41	B 40	C 61
D 96	D† 92	E 158
E† 154	F 41	

Standard part numbers shown. For other models refer to ordering information below.

§ dm³/s = 6.9 bar inlet, 6.2 bar no flow secondary setting and 0.7 bar pressure drop.

NOTE: 31mm hole required for panel mounting.

† With Auto Drain

Ordering Information

1 4 E 1 1 B 13 F C 1

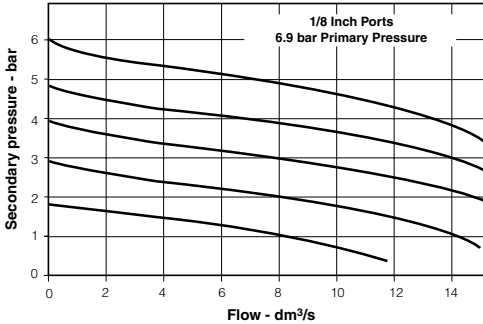
	Port size	Bowl options	Elements	Relief	Port type
0	1/8 Inch	1 Twist drain	B 5 Micron	F Relieving	Blank NPT
1	1/4 Inch	5 Automatic drain		G Non-Relieving	1 BSPP

Pressure range	
	Without gauge - Yellow knob
10	2 bar
11	4 bar
13	8 bar

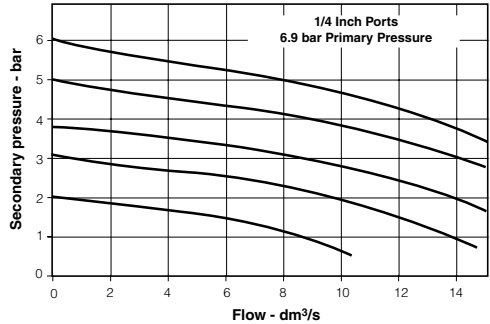
NOTE: BOLD OPTIONS ARE STANDARD.

Technical Information

**Relief and Flow Characteristics
14E01B13F***



**Relief and Flow Characteristics
14E11B13F***



CAUTION:

REGULATOR PRESSURE ADJUSTMENT – The working range of knob adjustment is designed to permit outlet pressures within their full range. Pressure adjustment beyond this range is also possible because the knob is not a limiting device. This is a common characteristic of most industrial regulators, and limiting devices may be obtained only by special design.

For best performance, regulated pressure should always be set by increasing the pressure up to the desired setting.

⚠ WARNING

**Product rupture can cause serious injury.
Do not exceed maximum primary pressure rating.**

14E Filter / Regulator Kits & Accessories

- Bowl Kits –**
- Poly Bowl – Automatic Drain PS408P
- Twist Drain PS404P
- Filter Element Kits – 40 Micron PS401P**
- 5 Micron PS403P
- Gauges –**
- 0 to 2 bar - 1/8 P3D-KAB1AYN
- 0 to 4 bar - 1/8 P3D-KAB1ALN
- 0 to 10 bar - 1/8 P3D-KAB1ANN
- Mounting Bracket Kit (Includes Panel Mount Nut) PS417BP**
- Panel Mount Nut P78652**
- Service Kits – Non-Relieving PS422P**
- Relieving PS423P

Specifications

- Automatic Pulse Drain Tube Barb 4mm^{OD} x 0.75^{LD}**
- Bowl Capacity 30 cm³**
- Gauge Ports (2) (Can be used for Full Flow) 1/8 Inch**
- Port Threads 1/8, 1/4 Inch**
- Pressure & Temperature Ratings –**
- Polycarbonate Bowl 0 to 10.3 bar, 0°C to 52°C
- Secondary Pressure Ranges –**
- Standard Pressure 0 to 8 bar
- Medium Pressure 0 to 2 bar
- Medium Pressure 0 to 4 bar
- Weight 180 g**

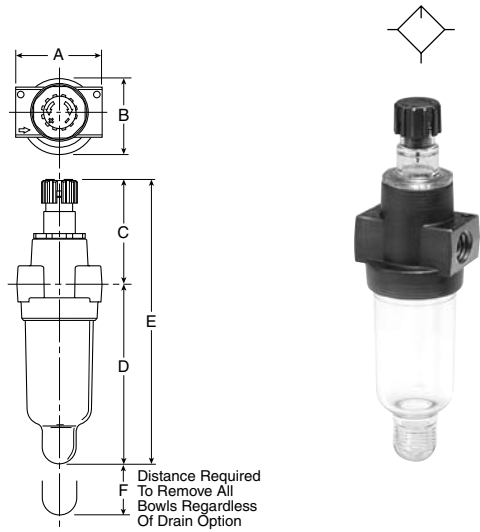
Materials of Construction

- Adjusting Nut Brass**
- Adjusting Stem & Spring Steel**
- Body Zinc**
- Bonnet, Knob, Seat, Piston, Holder & Deflector Plastic**
- Bowl Available – Transparent Polycarbonate**
- Drains – Manual – Twist Type**
- Body & Stem Plastic
- Seals Nitrile
- Automatic – Pulse Type
- Piston & Seals Nitrile
- Stem, Seat, Adaptor & Washers Aluminum
- Filter Elements – 5 Micron (Standard) Plastic**
- Seals Nitrile**

04L Mist Lubricators - Miniature

Features

- Proportional oil delivery over a wide range of air flows.
- Precision needle valve assures repeatable oil delivery and provides simple adjustment of delivery rate.
- Ideal for low and high flow applications with changing air flow.
- Transparent sight dome for 360° visibility.
- High Flow: 1/8" – 9 dm³/s§
1/4" – 10 dm³/s§



Port Size	BSPB No Drain
Poly Bowl	
1/8"	04L00GB1
1/4"	04L10GB1

04L Lubricator Dimensions (mm)		
A 44	B 40	C 55
D 92	D† 96	E 147
E† 151	F 41	

Standard part numbers shown bold.

For other models refer to ordering information below.

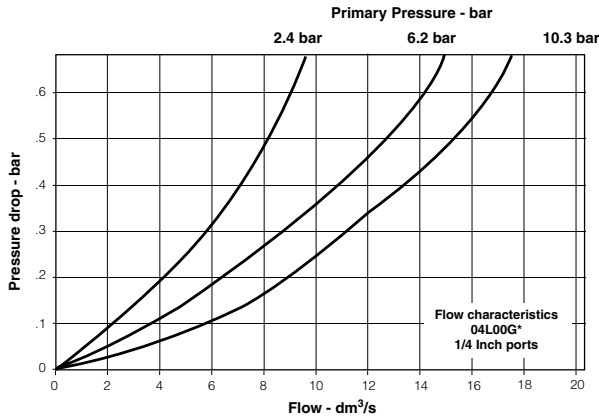
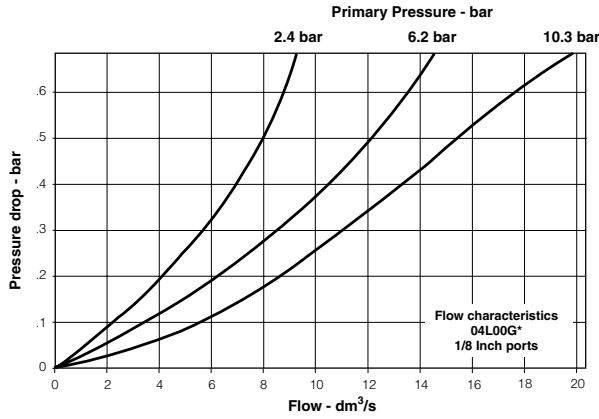
§ dm³/s = 6.2 bar inlet and 0.3 bar pressure drop.

Ordering Information

0	4	L	1	0	G	B	-														
			<table border="1" style="width: 100%; text-align: left;"> <thead> <tr> <th style="width: 20px;"></th> <th>Port size</th> </tr> </thead> <tbody> <tr> <td style="text-align: center;">0</td> <td>1/8 Inch</td> </tr> <tr> <td style="text-align: center;">1</td> <td>1/4 Inch</td> </tr> </tbody> </table>			Port size	0	1/8 Inch	1	1/4 Inch				<table border="1" style="width: 100%; text-align: left;"> <thead> <tr> <th style="width: 20px;"></th> <th>Port type</th> </tr> </thead> <tbody> <tr> <td style="text-align: center;">Blank</td> <td>NPT</td> </tr> <tr> <td style="text-align: center;">1</td> <td>BSPB</td> </tr> </tbody> </table>			Port type	Blank	NPT	1	BSPB
	Port size																				
0	1/8 Inch																				
1	1/4 Inch																				
	Port type																				
Blank	NPT																				
1	BSPB																				

NOTE: BOLD OPTIONS ARE STANDARD.

Technical Information



04L Mist Lubricator Kits & Accessories

Bowl Kits –

Poly Bowl – No Drain PS421P

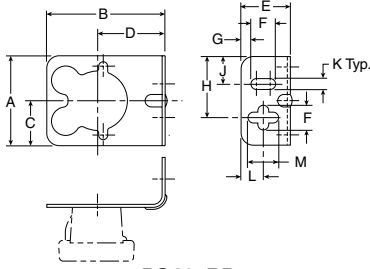
Specifications

Bowl Capacity 30 cm³
Minimum Flow for Lubrication 0.2 dm³/s at 6.9 bar
Port Threads 1/8, 1/4 Inch
Pressure & Temperature Ratings –
 Polycarbonate Bowl – 0 to 10.3 bar
 0°C to 52°C
Weight 180 g

Materials of Construction

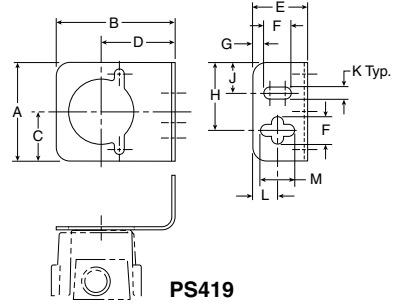
Body Zinc
Bowls – Transparent Polycarbonate
Seals Nitrile
Sight Dome Polycarbonate

Mounting Bracket Kits



PS417BP

(Includes Panel Mount Nut)



PS419

Dimensions (mm)

A	B	C	D	E	F	G	H	J	K	L	M	Kit
46	60	23	34	25	13	5	31	14	6	11	16	PS417BP (10F, 14F, 14R, 14E)
46	55	23	34	25	13	5	31	14	6	11	16	PS419 (04L)