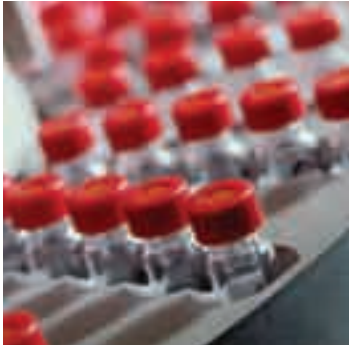




aerospace  
climate control  
electromechanical  
filtration  
fluid & gas handling  
hydraulics  
**pneumatics**  
process control  
sealing & shielding



# Pneumatic cylinders


Series P1G  
Cartridge Cylinders




ENGINEERING YOUR SUCCESS.

Features	Air cylinder	Hydraulic cylinder	Electro mechanical actuators
Overload safe	***	***	*
Easy to limit force	***	***	*
Easy to vary speed	***	***	*
Speed	***	**	**
Reliability	***	***	***
Robustness	***	***	*
Installation cost	***	*	**
Ease of service	***	**	*
Safety in damp environments	***	***	*
Safety in explosive atmospheres	***	***	*
Safety risk with electrical installations	***	***	*
Risk of oil leak	***	*	***
Clean, hygienic	***	**	*
Standardised measurements	***	***	*
Service life	***	***	*
Hydraulic system required	***	*	***
Weight	***	**	**
Purchase price	***	**	*
Power density	**	***	*
Noise level during operation	**	***	**
High force for size	**	***	*
Positioning possibilities	*	***	***
Total energy consumption	*	**	***
Service interval	*	**	***
Compressor capacity required	*	***	***


\* = good, \*\*=average, \*\*\*=excellent



**Important**  
 Before attempting any external or internal work on the cylinder or any connected components, make sure the cylinder is vented and disconnect the air supply in order to ensure isolation of the air supply.



**Note**  
 All technical data in this catalogue are typical data only.  
 Air quality is essential for maximum cylinder service life (see ISO 8573).



**WARNING**

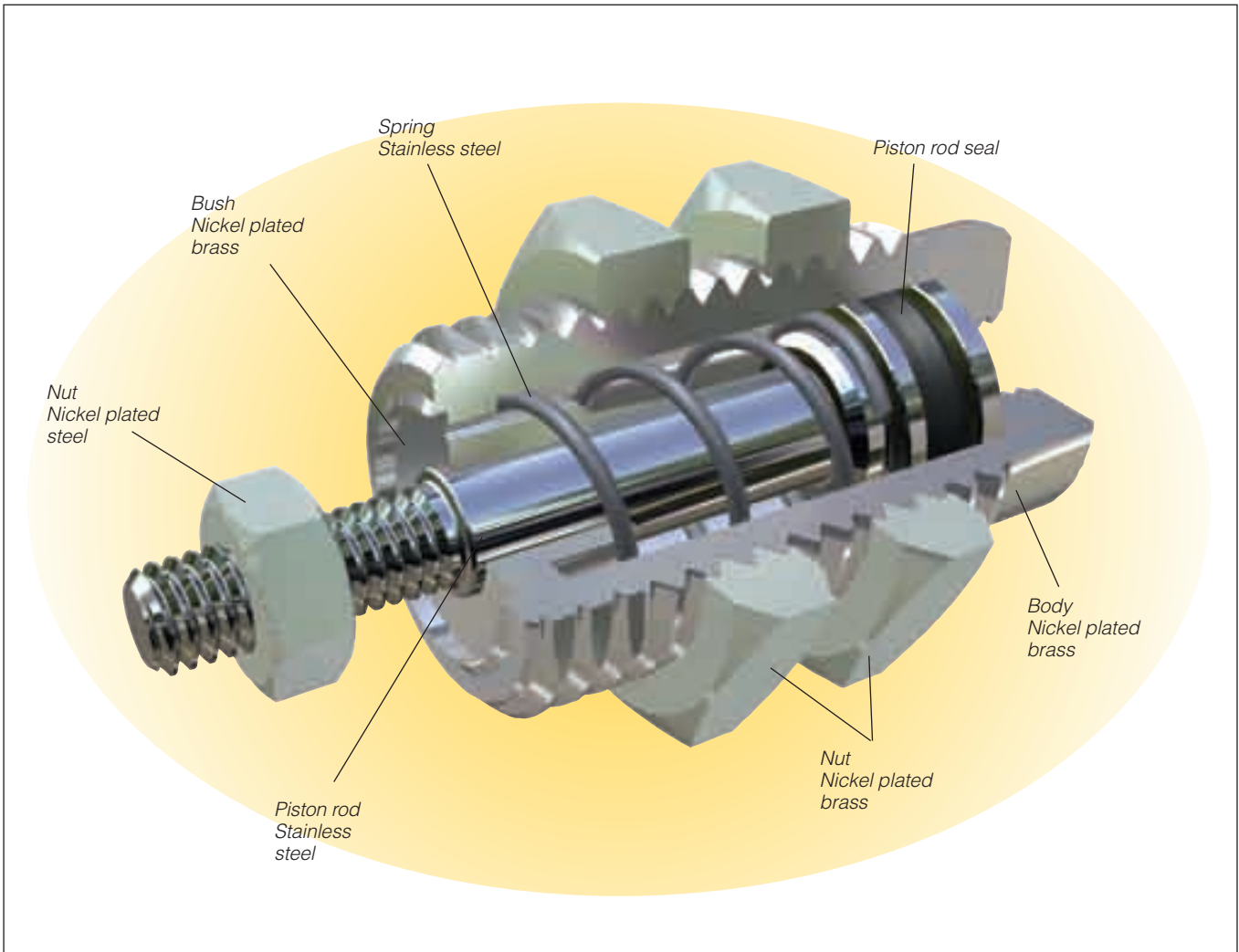
**FAILURE OR IMPROPER SELECTION OR IMPROPER USE OF THE PRODUCTS AND/OR SYSTEMS DESCRIBED HEREIN OR RELATED ITEMS CAN CAUSE DEATH, PERSONAL INJURY AND PROPERTY DAMAGE.**

This document and other information from Parker Hannifin Corporation, its subsidiaries and authorized distributors provide product and/or system options for further investigation by users having technical expertise. It is important that you analyze all aspects of your application and review the information concerning the product or system in the current product catalog. Due to the variety of operating conditions and applications for these products or systems, the user, through its own analysis and testing, is solely responsible for making the final selection of the products and systems and assuring that all performance, safety and warning requirements of the application are met. The products described herein, including without limitation, product features, specifications, designs, availability and pricing, are subject to change by Parker Hannifin Corporation and its subsidiaries at any time without notice.

**SALE CONDITIONS**

The items described in this document are available for sale by Parker Hannifin Corporation, its subsidiaries or its authorized distributors. Any sale contract entered into by Parker will be governed by the provisions stated in Parker's standard terms and conditions of sale (copy available upon request).

<b>Contents</b>	<b>Page</b>
Cartridge cylinder P1G.....	4
Cylinder forces .....	5
Working medium, air quality .....	5
Material specification .....	5
Additional data .....	5
Order key.....	6
Single-acting spring return.....	6
Dimensions.....	7



### Cartridge cylinder P1G

P1G cartridge cylinders are the perfect solution for compact installation requirements. The cylinders are fully threaded on the outside, allowing them to be screwed into bores in tools, machine stands, etc. This means they require no additional space—instead they virtually disappear into the machine/equipment. They are designed for a long service life, and for non-lube

operation. P1G cylinders are made of a material that allows them to be used in applications requiring a high level of corrosion resistance. They are all single acting, and are available with 6, 10 and 16 mm bore sizes. Each of the P1G cylinders is available with a choice of stroke length: 5, 10 or 15 mm. P1G cylinders are supplied complete with one piston rod nut and two lock nuts for easy installation.

## Cylinder force

Indicated cylinder forces are theoretical and should be reduced according to the working conditions.

Order code	Theoretical piston force at 6 bar		Spring retraction	
	Nmax	Nmin	Nmax	Nmin
<b>Single acting, spring return</b>				
P1G-S006SS-0005	15,0	12,9	3,7	1,6
P1G-S006SS-0010	14,9	12,7	3,9	1,7
P1G-S006SS-0015	15,0	12,7	3,9	1,6
P1G-S010SS-0005	38,8	34,6	11,6	7,4
P1G-S010SS-0010	40,2	34,2	12,0	6,0
P1G-S010SS-0015	39,4	33,4	12,8	6,8
P1G-S016SS-0005	109,6	108,8	9,6	8,8
P1G-S016SS-0010	104,4	100,3	18,1	14,0
P1G-S016SS-0015	104,4	100,3	18,1	14,0

## Material specification

Cylinder housing	Stainless steel
Piston rod bearing/	
Front end cover	Nickel plated brass
Cylinderhus	Nickel plated brass
Piston seal, Ø6	Nitrilgummi NBR
Piston seal, Ø10 and 16	Polyurethane
Return spring	Stainless steel
Piston rod nut	Nickel plated steel
Mounting nut	Nickel plated brass

Spare part = new cylinder

## Working medium, air quality

Working medium Dry, filtered compressed air to ISO 8573-1 class 3.4.3.

### Recommended air quality for cylinders

For best possible service life and trouble-free operation, ISO 8573-1 quality class 3.4.3 should be used. This means 5 µm filter (standard filter) dew point +3 °C for indoor operation (a lower dew point should be selected for outdoor operation) and oil concentration 1.0 mg oil/m<sup>3</sup>, which is what a standard compressor with a standard filter gives.

### ISO 8573-1 quality classes

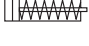
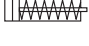
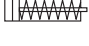
Quality class	Pollution		Water max. press. dew point (°C)	Oil max concentration (mg/m <sup>3</sup> )
	particle size (µm)	max concentration (mg/m <sup>3</sup> )		
1	0,1	0,1	-70	0,01
2	1	1	-40	0,1
3	5	5	-20	1,0
4	15	8	+3	5,0
5	40	10	+7	25
6	-	-	+10	-

## Additional data

Working pressure	max	7 bar
	min	2 bar
Working temperature	max	+80 °C
	min	-20 °C

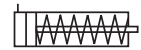
Prelubricated, further lubrication is not normally necessary. If additional lubrication is introduced it must be continued.

## Order key

<b>P1G</b>	<b>-</b>	<b>S</b>	<b>016</b>	<b>S</b>	<b>S</b>	<b>-</b>	<b>0005</b>															
<b>Cylinder bore mm</b>			<b>Cylinder type / function</b>		<b>Sealing material</b>		<b>Sealing material</b>															
<table border="1"> <tr><td><b>006</b></td></tr> <tr><td><b>010</b></td></tr> <tr><td><b>016</b></td></tr> </table>			<b>006</b>	<b>010</b>	<b>016</b>	<table border="1"> <tr> <td><b>S</b></td> <td></td> <td>Single-acting, spring return for retract stroke</td> </tr> </table>		<b>S</b>		Single-acting, spring return for retract stroke	<table border="1"> <tr> <td><b>S</b></td> <td>Standard, -20 °C to +80 °C</td> </tr> </table>		<b>S</b>	Standard, -20 °C to +80 °C	<table border="1"> <tr> <td><b>0005</b></td> <td>5</td> </tr> <tr> <td><b>0010</b></td> <td>10</td> </tr> <tr> <td><b>0015</b></td> <td>15</td> </tr> </table>		<b>0005</b>	5	<b>0010</b>	10	<b>0015</b>	15
<b>006</b>																						
<b>010</b>																						
<b>016</b>																						
<b>S</b>		Single-acting, spring return for retract stroke																				
<b>S</b>	Standard, -20 °C to +80 °C																					
<b>0005</b>	5																					
<b>0010</b>	10																					
<b>0015</b>	15																					



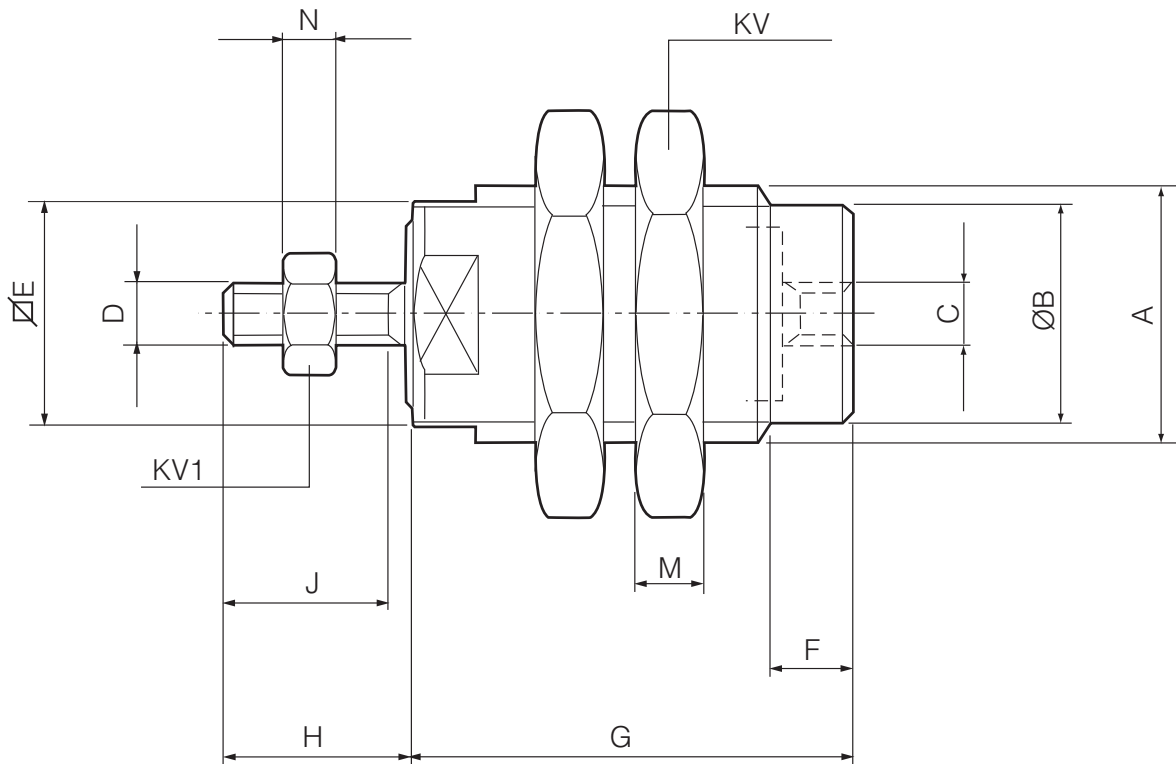
## Single-acting spring return



Cyl.bore mm	Stroke mm	Weight g	Order code
<b>6</b> Conn. M5	5	10	<b>P1G-S006SS-0005</b>
	10	13	<b>P1G-S006SS-0010</b>
	15	15	<b>P1G-S006SS-0015</b>
<b>10</b> Conn. M5	5	27	<b>P1G-S010SS-0005</b>
	10	32	<b>P1G-S010SS-0010</b>
	15	36	<b>P1G-S010SS-0015</b>
<b>16</b> Conn. M5	5	70	<b>P1G-S016SS-0005</b>
	10	78	<b>P1G-S016SS-0010</b>
	15	87	<b>P1G-S016SS-0015</b>

Cylinders are supplied complete with two mounting nuts and one piston rod nut.

## Dimensions



Cylinder bore	A	ØB	C	D	E	F	G			H	J	KV	KV1	M	N
							5 <sup>1)</sup>	10 <sup>1)</sup>	15 <sup>1)</sup>						
mm	mm	mm	mm	mm	mm	mm	mm	mm	mm	mm	mm	mm	mm	mm	mm
6	M10x1	8,5	M5	M3x0,5	9	5	18,5	25,5	32,5	9	9	14	5,5	3	2,4
10	M15x1,5	13	M5	M4x0,7	14	5	20,5	27	34	11,5	11	19	7	4	3,2
16	M22x1,5	19	M5	M5x0,8	20	6	23,5	29,5	36	14	12	27	8	5	4

1) Stroke length in mm



### Caution

Avoid side loads on the piston rod  
 Avoid loading the piston rod during retraction  
 Do not operate the cylinders with excessive inertia.



# Parker Worldwide

**AE – UAE, Dubai**  
Tel: +971 4 8875600  
parker.me@parker.com

**AR – Argentina, Buenos Aires**  
Tel: +54 3327 44 4129

**AT – Austria, Wiener Neustadt**  
Tel: +43 (0)2622 23501-0  
parker.austria@parker.com

**AT – Eastern Europe, Wiener Neustadt**  
Tel: +43 (0)2622 23501 970  
parker.easteurope@parker.com

**AU – Australia, Castle Hill**  
Tel: +61 (0)2-9634 7777

**AZ – Azerbaijan, Baku**  
Tel: +994 50 2233 458  
parker.azerbaijan@parker.com

**BE/LX – Belgium, Nivelles**  
Tel: +32 (0)67 280 900  
parker.belgium@parker.com

**BR – Brazil, Cachoeirinha RS**  
Tel: +55 51 3470 9144

**BY – Belarus, Minsk**  
Tel: +375 17 209 9399  
parker.belarus@parker.com

**CA – Canada, Milton, Ontario**  
Tel: +1 905 693 3000

**CH – Switzerland, Etoy**  
Tel: +41 (0) 21 821 02 30  
parker.switzerland@parker.com

**CN – China, Shanghai**  
Tel: +86 21 5031 2525

**CZ – Czech Republic, Klecany**  
Tel: +420 284 083 111  
parker.czechrepublic@parker.com

**DE – Germany, Kaarst**  
Tel: +49 (0)2131 4016 0  
parker.germany@parker.com

**DK – Denmark, Ballerup**  
Tel: +45 43 56 04 00  
parker.denmark@parker.com

**ES – Spain, Madrid**  
Tel: +34 902 33 00 01  
parker.spain@parker.com

**FI – Finland, Vantaa**  
Tel: +358 (0)20 753 2500  
parker.finland@parker.com

**FR – France, Contamine s/Arve**  
Tel: +33 (0)4 50 25 80 25  
parker.france@parker.com

**GR – Greece, Athens**  
Tel: +30 210 933 6450  
parker.greece@parker.com

**HK – Hong Kong**  
Tel: +852 2428 8008

**HU – Hungary, Budapest**  
Tel: +36 1 220 4155  
parker.hungary@parker.com

**IE – Ireland, Dublin**  
Tel: +353 (0)1 466 6370  
parker.ireland@parker.com

**IN – India, Mumbai**  
Tel: +91 22 6513 7081-85

**IT – Italy, Corsico (MI)**  
Tel: +39 02 45 19 21  
parker.italy@parker.com

**JP – Japan, Fujisawa**  
Tel: +(81) 4 6635 3050

**KR – South Korea, Seoul**  
Tel: +82 2 559 0400

**KZ – Kazakhstan, Almaty**  
Tel: +7 7272 505 800  
parker.easteurope@parker.com

**LV – Latvia, Riga**  
Tel: +371 6 745 2601  
parker.latvia@parker.com

**MX – Mexico, Apodaca**  
Tel: +52 81 8156 6000

**MY – Malaysia, Subang Jaya**  
Tel: +60 3 5638 1476

**NL – The Netherlands, Oldenzaal**  
Tel: +31 (0)541 585 000  
parker.nl@parker.com

**NO – Norway, Ski**  
Tel: +47 64 91 10 00  
parker.norway@parker.com

**NZ – New Zealand, Mt Wellington**  
Tel: +64 9 574 1744

**PL – Poland, Warsaw**  
Tel: +48 (0)22 573 24 00  
parker.poland@parker.com

**PT – Portugal, Leca da Palmeira**  
Tel: +351 22 999 7360  
parker.portugal@parker.com

**RO – Romania, Bucharest**  
Tel: +40 21 252 1382  
parker.romania@parker.com

**RU – Russia, Moscow**  
Tel: +7 495 645-2156  
parker.russia@parker.com

**SE – Sweden, Spånga**  
Tel: +46 (0)8 59 79 50 00  
parker.sweden@parker.com

**SG – Singapore**  
Tel: +65 6887 6300

**SK – Slovakia, Banská Bystrica**  
Tel: +421 484 162 252  
parker.slovakia@parker.com

**SL – Slovenia, Novo Mesto**  
Tel: +386 7 337 6650  
parker.slovenia@parker.com

**TH – Thailand, Bangkok**  
Tel: +662 717 8140

**TR – Turkey, Istanbul**  
Tel: +90 216 4997081  
parker.turkey@parker.com

**TW – Taiwan, Taipei**  
Tel: +886 2 2298 8987

**UA – Ukraine, Kiev**  
Tel: +380 44 494 2731  
parker.ukraine@parker.com

**UK – United Kingdom, Warwick**  
Tel: +44 (0)1926 317 878  
parker.uk@parker.com

**US – USA, Cleveland**  
Tel: +1 216 896 3000

**VE – Venezuela, Caracas**  
Tel: +58 212 238 5422

**ZA – South Africa, Kempton Park**  
Tel: +27 (0)11 961 0700  
parker.southafrica@parker.com

**European Product Information Centre**

**Free phone: 00 800 27 27 5374**

**(from AT, BE, CH, CZ, DE, DK, EE, EI, ES, FI, FR, IT, NL, NO, PL, RU, SE, SK, UK, ZA)**

